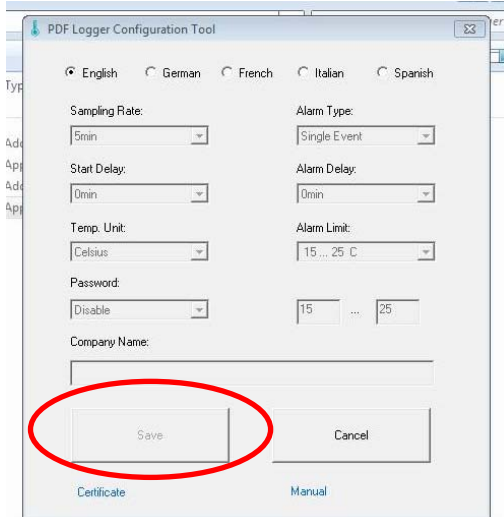


Subject: While I plug single use PDF logger or multi use PDF logger into company computer USB port, while I can't program the logger?

1. All AZ made USB driver less and software less data loggers (single/multi use) are recognized as CD ROM while plugging into computer. So, if your company computer has been blocked by IT people for security reason, you won't be able to program the loggers and you will see below display which **"SAVE"** function is not available.

2. If you are not allowed to operate devices by USB port on company, the quickest solution is changing the logger operation to another notebook. Portable notebook is normally not blocked by IT for security reason.

-Single use data logger. While USB port of computer is blocked



-Multi use data logger. While USB port of computer is blocked

