

Edit by Naima 09 Jan. 2024

**Question**

How to get the real-time output data from my handheld meter in HyperTerminal?

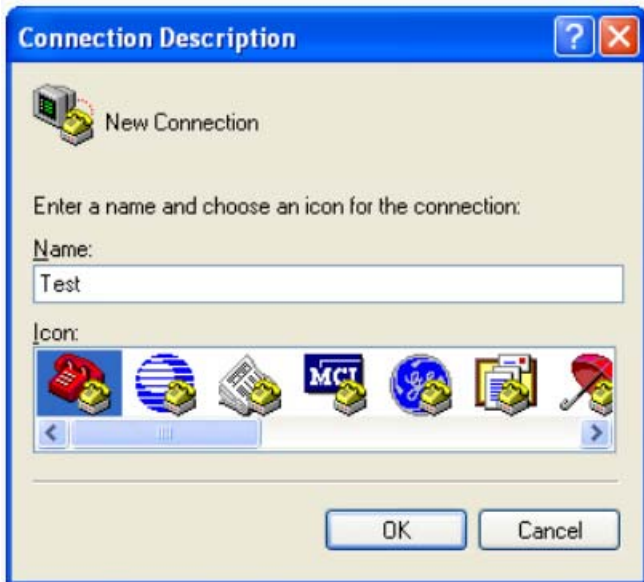
**Reply:**

**Please follow below 4 steps:**

**1. Click your path depending on your Windows operating system**

In the Connect To window, enter a name, select an icon, and then click OK.

A new Connect To window is displayed.



**2. Select the communications port being used for the console.**

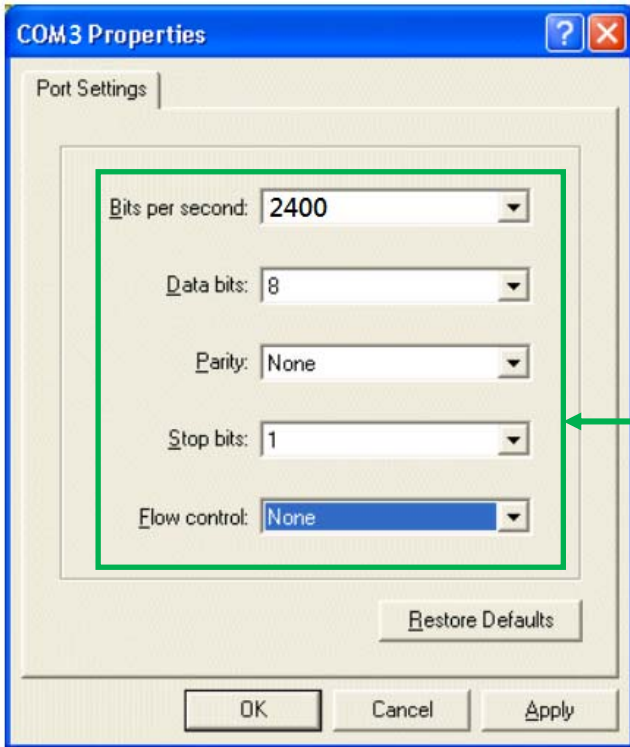
It might also be listed as direct to COMn (where n is 1 to 9).



Right click "My Computer" and select "Properties". Go to "Hardware" and open "Device Manager". In devices list, click "Ports (Com & LPT)" to see the port properties and get the port number used.



### 3. Do the port setting base on models, below is the example for 885x thermometer

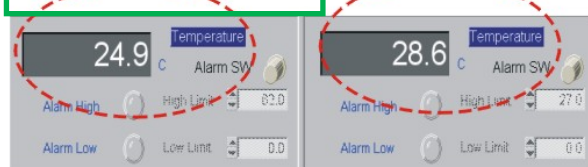


#### K.J.T. TYPE & K.J.T.R.S.E. DUAL INPUT THERMOMETER

The screen shows T1 temperature value in the left block and T2 temperature is shown in the right block.

The meter unit can be easily changed the unit at your disposal, If the meter is set in °C, the data logging will show in °C. Once you change the meter unit to °F, the screen unit will be changed to °F simultaneously. Recommend to reset the **Display range** at the same time, or you will see a minor chart change on the screen. (See Diagram T)

**FORMAT:**  
 Baud Rate :2,400 bit /sec.  
 Data Bits : 8  
 Stop Bit : 1  
 TXXX.XC(F):TXXX.XC(F)



**Diagram T**

### 4. After press Apply→OK, Real time output data will be displayed

