

QUICK START GUIDE



For detail operation procedure, please download the manual from software CD!!

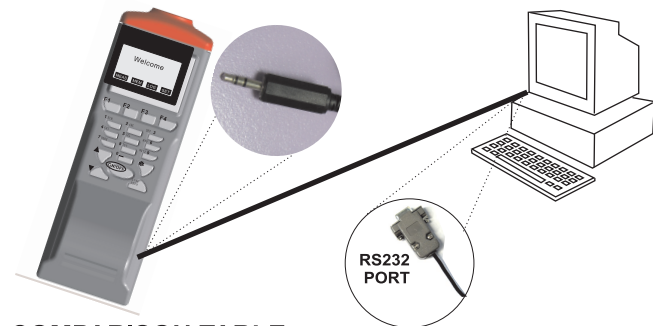
INSTALL THE SOFTWARE

Insert the printer software CD then the installation program will start automatically.

- Install Software : Run the installation program
- Website : Visit our website
- Browse CD-ROM : Browse the CD-ROM through Windows.
- Manual : Detail operation procedure in PDF format
- Exit : Exit the installation

ATTACH THE INTERFACE

Fit the RS232 port cable to your computer by connecting it to the serial port COM1 to COM4 of your PC or Notebook.



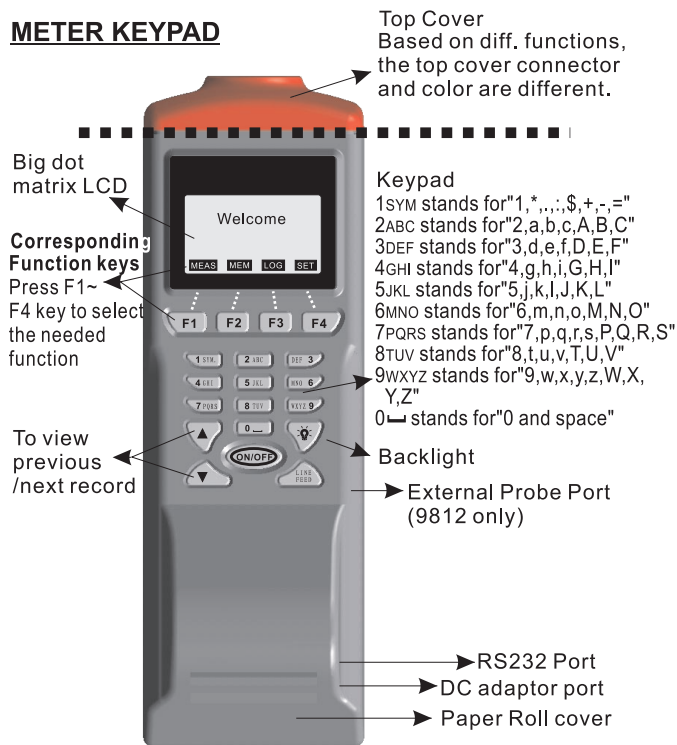
COMPARISON TABLE

This meter features with three measurement modes:

- Single point measurement (MEAS)
- Multiple points measurement via manual record (MEM)
- Automatically Logging (LOG)

1

METER KEYPAD



ACCESSORY REMINDER

- 9871: The temp. and RH sensors are embedded in the fan so please rotate the cover before using to get accurate reading.
- 9861: Please always keep the pH glass bulb wet by using the cap to protect and store the electrode.
- 9881/9882: Both are dual-input thermometers. Please plug the

3

Measuring parameters of each meter:

MODEL	FUNCTION	PARAMETERS
9811	IR Thermometer	Temperature
9812	IR Thermometer w/probe	
9861	pH meter	pH value, Voltage, Temperature
9871	Anemometer	Air Flow, Humidity, Temperature, Wet Bulb, Air Volume
9881	Dual K Type Thermometer	Temperature, Temperature Difference
9882	Dual K.J.T.R.S.E Type Thermometer	
9680	IrDA receiver	Compatible with AZ IrDA products
9851	Humidity Meter	Humidity, Temperature, Wet Bulb Temp., Dew Point Temp.
983X	5 Diff. Ranges Manometer	psi, in. of H ₂ O, bar, mbar, mm of Hg, in. of Hg, oz/inch ² , Kg/cm ² , kPa, Ft of H ₂ O, cm of H ₂ O

The difference of each measurement mode.

MEASUREMENT	DESCRIPTION	Memory Point
Single Point Measurement	Single point measurement with printing	Single Point
Multiple Point Measurement	File name editable multiple point measurement with printing	99 Points
Datalogging	Programmable datalogging function with printing	12000 points(9811, 983X), 6000 points (9812), 4000 points(9861, 9881, 9882), 2400 points(9871), 3000 points(9851), 12000 points(9680, at most)

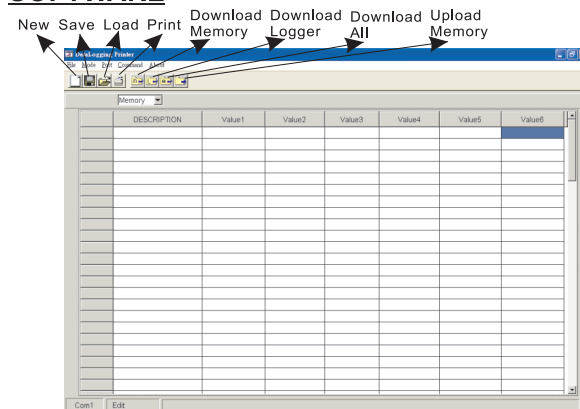
Multiple points measurement v.s datalogging measurement

FUNCTION	MULTIPLE POINT MEASUREMENT	DATALOGGING
RECORD	99 points	At most 12000 points
FILE NAME	Editable or default (with date and time)	Default
MEASURING / SAMPLING	Press "ON" or "MEAS" key to measure. To store by pressing specified keys	Automatically measure and store according to pre-set parameters

2

- thermocouple probe into the top cover by following up "+" / "-" and T1/T2 symbols.
- 9680: The effective receipt angle of IrDA is within 30 degree.
- 9812: Keep the probe calibration small paper for calibration use.
- 9851: Keep the probe calibration small paper for calibration use.

SOFTWARE



- Select the correct Com. port number to ensure the meter could communicate with PC.
- There are four command in this software.
 - Download measured logging data from meter to PC.
 - Download measured memory data from meter to PC.
 - Download measured logging & memory data from meter to PC.
 - Upload pre-edit memory file name from PC to meter.
- To edit the memory file name, click left key of mouse twice quickly, then the cursor will flash to indicate the column is ready.
- Before uploading or downloading, make sure you choose the correct mode then you could see the correct display. If choosing memory but execute downloading logging, user need to switch the mode to logger again to have the correct display.
- While meter connected with PC, "PC Mode" will be displayed on the meter LCD until dis-connected.

4